



WOMEN HOODIE SWEATSHIRTS
STSWI32 - STELLA BOWER

The women's cropped hoodie sweatshirt

Medium Fit

- Raglan sleeve
- Lined hood in single jersey
- Inside herringbone back neck tape
- Self fabric half moon at back neck
- Single needle topstitch at neckline and bottom hem
- 1x1 rib at sleeve hem with twin needle topstitch
- Round drawcords at bottom hem in matching body colour with metal tipping
- Metal eyelets

Shell : Brushed , 85% Cotton - Organic Ring Spun Combed , 15% Polyester - Recycled , Fabric washed , Light sueded , 300 GSM

WHITES



NATURAL RAW

COLORS



BLACK

INDIGO GREY

ESSENTIAL

HEATHERS



HEATHER GREY

CREAM HEATHER PINK

Printing Specifications

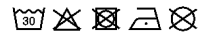
For suitable print techniques, please download our printing guide

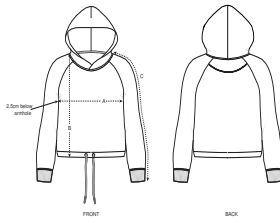
Certifications & memberships



Wash Instructions

Wash similar colours together, do not iron on print, wash and iron inside out.





SIZES		XS	S	M	L	XL
A	Half Chest	50.5	53	56	59	62
B	Body Length	55	57	59	61	62
C	Sleeve Length	67.8	69	70.5	71.8	73

PACKING

SIZES	XS	S	M	L	XL
PCS/BAG	5	5	5	5	5
PCS/BOX	20	20	20	20	20